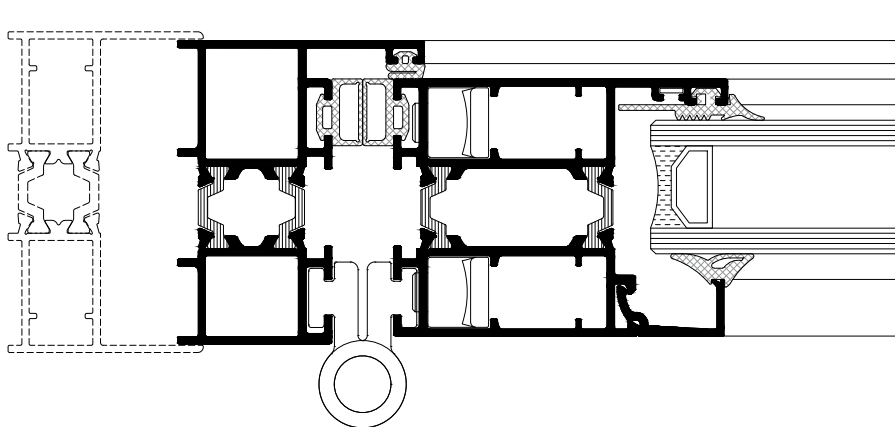


E39 Folding & Sliding System



Designed to give freedom of access between internal and external spaces. With multiple frame sealing possibilities, is ideal for wide range of applications in, private residences, hotels or any other commercial application.



Technical features

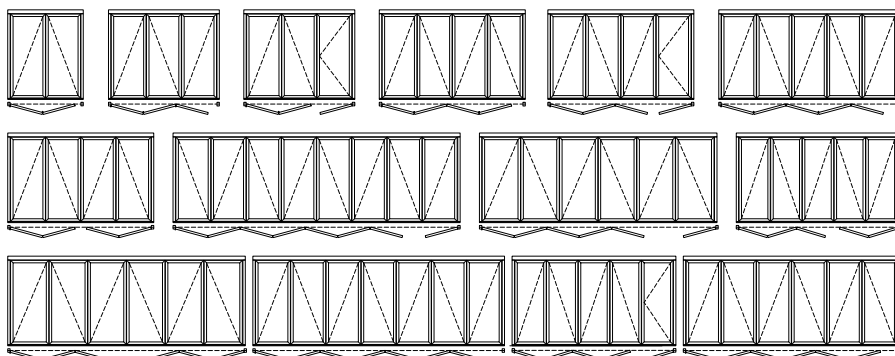
Straight line profiles
Fixed frame (min. depth): 59 mm
Sash frame (min. depth): 50mm
Sash profile height: 65 mm
Single, double glazing option
Glazing infill range: 6 ÷ 34 mm
Max.sash width: 1000 mm
Max.sash height: 2800 mm

Performance

Air Permeability:	up to Class 4
Watertightness:	up to class 4A
Resistance to wind load:	up to class C1
Thermal transmittance (U_f):	from 2.7 W/(m²K)

Typologies

- Sliding and folding doors - windows
- Inwards opening
- Limitless combinations between sash batches
- Rectangular



Hardware

Euro groove
Max. leaf weight: 110 kg
Anodised aluminium and stainless-steel accessories

Surface treatment options

RAL colours
ETEM colours
Anodising
Wood effects
Quality Standards:
- QUALICOAT
- QUALANOD
- QUALIDECO

Production certificates

- EN ISO 9001
- EN ISO 14001
- OHSAS 18001

