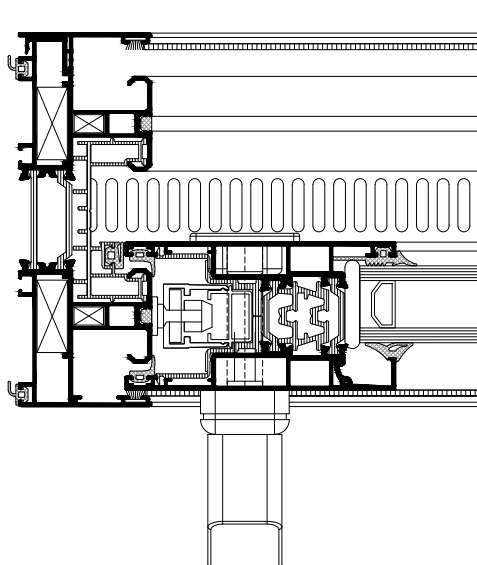


# E50 Sliding System



E50 is a high-end sliding system with thermal break. Combines the trends in modern architectures with the needs arising from the strict standards for energy conservation. Designed for medium and large openings.

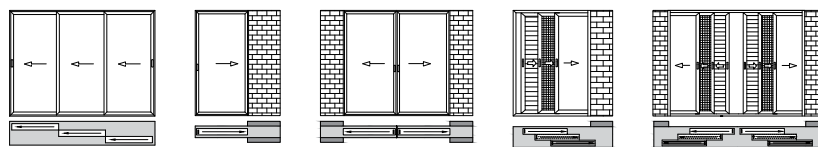
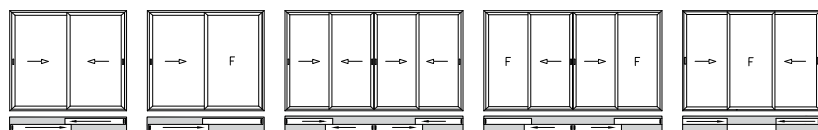


## Performance

Air Permeability:	up to <b>Class 4</b>
Watertightness:	up to Class <b>E1200</b>
Resistance to wind load:	up to Class <b>C3</b>
Thermal transmittance ( $U_p$ ):	from <b>2.0 W/(m<sup>2</sup>K)</b>
Acoustic performance:	up to <b>41 dB</b>

## Typologies

- Single, double, triple & quadruple sliding
- Opposed & pocket sliding
- Sliding & fixed
- Hotel type
- Fly screen & sliding shutter incorporated solution



## Technical features

- One frame, all around
- Narrow Interlock concept
- Optimum design for reduced weight
- Single, double and triple glazing option - up to 40 mm
- Energy efficiency concepts: Advanced, Improved & Basic

## Hardware

- Slide / Lift & Slide mechanism
- Max. sash weight (for Slide mechanism): 200 kg
- Max. sash weight (for Lift & Slide mechanism): 300 kg
- On demand: Max. sash width/height up to 3300 mm/3300 mm
- On demand: up to 400kg ( for Lift & Slide mechanism)

## Surface treatment options

- RAL colours
- ETEM colours
- Anodising
- Wood effects
- Quality Standards:
  - QUALICOAT
  - QUALANOD
  - QUALIDECO

## Production certificates

- EN ISO 9001
- EN ISO 14001
- OHSAS 18001

